



IT'S UPTIME

October-December 2020

BUILDING REPUTATIONS ONE PART AT A TIME.

TRUST US TO KEEP YOU MOVING.

**\$10.69ea****CABIN AIR FILTERS**

FLTCT6427FL

Fleetrite Cabin Air Filter, High Efficiency, Freightliner

**\$15.00 off****HALDEX BRAKE ROTORS**

SPECIAL

\$15.00 OFF

Select Haldex Brake Rotors
Special order only**\$792.50ea****CONVERSION KIT**

ZBH995543

RETRO FI

**\$48.68ea****WHEEL BEARING**

FLTSET401

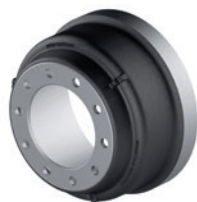
Standard R Drive Axle Inner
Bearing replacement for SET401
(FLT580 & FLT572)**\$118.50ea****RADIO**

29LTD

Cobra Classic 40-Channel CB
Radio with SWR Calibration**\$72.95ea****CABLE**

FLTCE621

ABS Coil 15' with Plugs

**\$82.95ea****BRAKE DRUM**

FLT4400B

Fleetrite Brake Drum; Placement:
Rear; Dimensions: 16.5 IN X 7 IN**\$124.50ea****AIR SPRINGS**

FLTA1R12432

Fleetrite Air Spring, International

**\$47.00ea****LIGHTING**

OPTTLL45FB

ROUND LED WORKLIGHT FLOOD
BEAM**\$950.00ea****GRILLE GUARDS**

FLTGGT68011

Grille Guard, Stainless Steel,
Includes Mount Bracket, Kenworth
T680, 2011+**\$0.95ea****5TH WHEEL GREASE**

PTX01010

Effectively and conveniently
lubricates 5th wheel top plates of
trailer. Premeasured grease comes
in handy pouch requires no tools
creates no mess.**\$2.50ea****WINDSHIELD WASHER**

FLTWWS160Z

Fleetrite Windshield Washer; Size:
16 oz; Type: Windshield Washer
Concentrate**\$189.95ea****ALTERNATOR**

8600889

24SI 160 Amp Pad Mount New
Service Alternator. The industry's
#1 selling All-Makes aftermarket
pad mount alternator.**\$4.25ea****WIPER BLADES**

FLTP18

Fleetrite Wiper Blade; Mount Style:
Universal; Material: Metal; Style:
Premium; Blade Length (in): 18 IN**\$112.95ea****ROTOR**

FLT1700150S1

ABS Rotor Corrosion-Resistant.
15 OD 4.44 height 10-hole 7.25
bolt circle. Crosses to 2594596C1.
Also available FLT1700149S1 and
FLT1700148S1.**\$64.50ea****TIRE CHAIN**

PTCH2249SCL

GLACIER

**\$63.50ea****TIRE CHAIN**

PTCH2247SC

GLACIER

**\$84.95ea****REFRIGERANT**

WEIR134A

R-134A 30LB AUTO

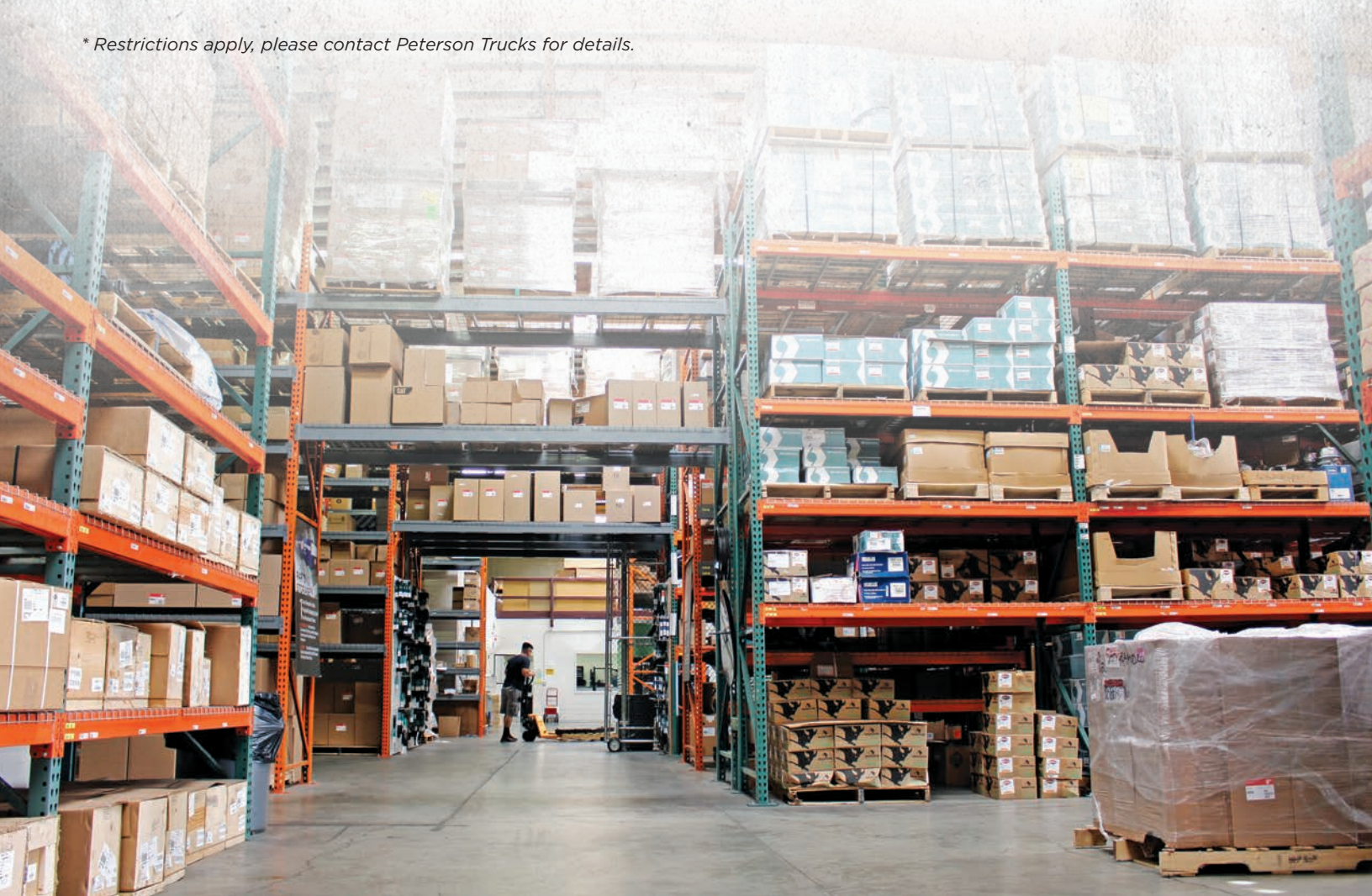
Prices in effect on RepairLink from October 1, 2020 through December 31, 2020, unless otherwise specified or while supplies last. Installed pricing does not include shop supplies or hazardous material disposal. Prices are subject to change, and do not include state and local taxes if applicable. Pricing and specific details may vary at participating International dealer locations. See dealer for details.
The warranties found herein are those of the manufacturer and are not the warranties of Navistar, Inc. Artwork is for illustration purposes only and may not represent actual product. ©2020 Navistar, Inc. All rights reserved. All marks are trademarks of their respective owners. All Promotional Pricing: Navistar, Inc. reserves the right to modify or cancel this promotion at any time. Additional discounts for National Accounts do not apply.

CURRENT REVOLVING ACCOUNT CARD OFFER:

0% for 12 Payments*
on qualifying parts and service purchased
through Peterson Trucks, for purchases of
\$2,000 or more. Available at all Peterson Truck locations.
Valid January 1, 2020 through December 31, 2020.



** Restrictions apply, please contact Peterson Trucks for details.*



YOUR NORTHERN CALIFORNIA & WESTERN OREGON INTERNATIONAL® TRUCK DEALER

www.petersontrucks.com

CA 888-818-1806 | OR 800-275-9200

PETERSON
TRUCKS



SAN LEANDRO
2718 Teagarden Street
San Leandro, CA 94577

SAN MARTIN
13155 Sycamore Avenue
San Martin, CA 95046

ALBANY
1720 Fescue St SE
Albany, OR 97322

PORTLAND
61 NE Columbia Blvd
Portland, OR 97211

REDMOND
3635 SW Airport Way
Redmond, OR 97756

SANTA ROSA
3710 Regional Pkwy.
Santa Rosa, CA 95403

FORTUNA
1700 Alamar Way
Fortuna, CA 95540

EUGENE
110 S Bertelsen Rd
Eugene, OR 97402

SALEM
3850 Turner Rd SE
Salem, OR 97302